

# Atlas Plus Commercial LED Floodlights

80W / 125W / 165W.

This instruction sheet is relevant to Phoebe LED Atlas Plus Commercial LED Floodlights part codes: 18068,18075 & 18082

THANK YOU for purchasing this PHOEBE LED product. To help ensure this luminaire gives complete satisfaction please only use it according to the following instructions, and then pass the instructions to the appropriate person for retention and future reference.

## WARNING

1. Installation only to be carried out by a qualified electrician
2. Please ensure the surface is suitable and capable of holding the lamp weight.
3. Do not operate if the product is damaged.
4. This product is not suitable for fire-rated installations.



## Environmental Protection

Waste electrical products should not be disposed of with household waste. Please recycle where facilities exist. Check with your Local Authority or retailer for recycling advice.

The light source of this luminaire is not replaceable; when the light source reaches it's end of life the whole luminaire should be replaced

## BEFORE YOU START

PLEASE READ ALL THE INSTRUCTIONS CAREFULLY

Prior to installation - Turn the Power off at the mains

Installation complete - Turn the power back on at the mains

Circuit Testing - For high voltage circuit insulation testing disconnect the mains input supply first (do not circuit test using a Megger)

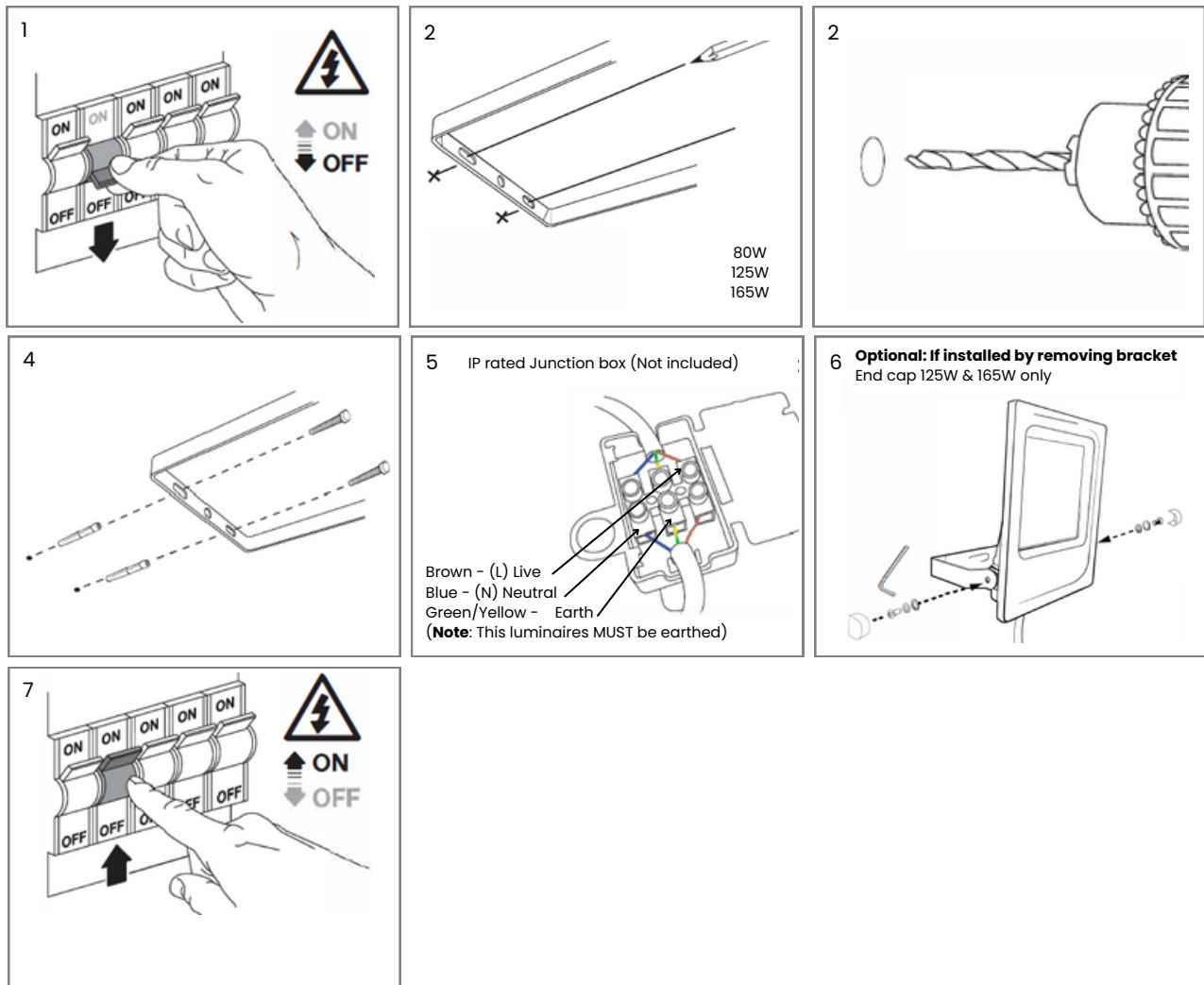
Images are for information only. Phoebe LED shall not be held liable for improper operation of the luminaire in circumstances where procedures and specifications have not been followed correctly. Crompton Lamps Limited 2024

[cromptonlamps.com](http://cromptonlamps.com) | [sales@cromptonlamps.com](mailto:sales@cromptonlamps.com) | 01274 657 088

Crompton Lamps Limited, Unit 2, Martree Business Park, Bowling Back Lane, Bradford, BD4 8QE

# Atlas Plus Commercial LED Floodlights


80W / 125W / 165W.



## IMPORTANT INSTALLATION INFORMATION

- Installation should be carried out in accordance with the latest edition of the National Wiring Regulations. If in doubt, consult a qualified electrician.
- Input voltage -100-277V 50/60Hz.
- These luminaires are not dimmable.
- These luminaires are IP65 and are protected against low-pressure water jets.
- Powder-coated luminaires are corrosion resistant but the finish may degrade long-term if installed in coastal areas.
- Do not install in chlorinated areas, i.e. swimming pools. Do not install in saunas or steam rooms.
- Do not install luminaires near air conditioners or central heating units as this may affect operation.
- There are no serviceable parts in these luminaires.
- Caution: Do not stare directly into the LEDs in operation. These are high-power LED floodlights and may be harmful to eyes.
- These luminaires are Class 1 and must be earthed
- This product contains a light source of energy efficiency class D.

## INSTALLATION

- Fix the luminaire out of reach (2.5m) with appropriate fixings
- connect the mains supply cable to the terminals as follows:  
LIVE - (red or brown) to the terminal marked L.  
NEUTRAL - (black or blue) to the terminal marked N.  
EARTH - (green/yellow) to the terminal marked 
- The luminaire MUST be earthed

Images are for information only. Phoebe LED shall not be held liable for improper operation of the luminaire in circumstances where procedures and specifications have not been followed correctly. Crompton Lamps Limited 2024

[cromptonlamps.com](http://cromptonlamps.com) | [sales@cromptonlamps.com](mailto:sales@cromptonlamps.com) | 01274 657 088

Crompton Lamps Limited, Unit 2, Marrtree Business Park, Bowling Back Lane, Bradford, BD4 8QE